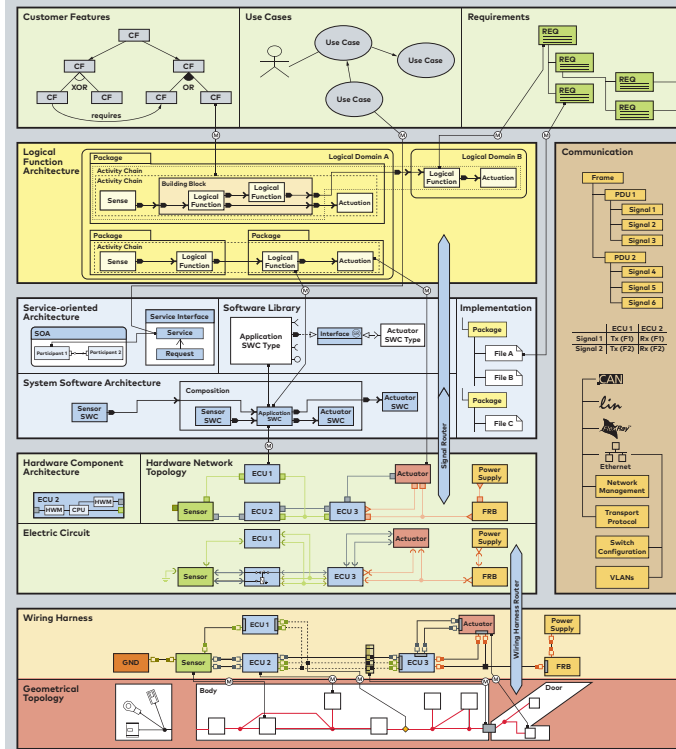
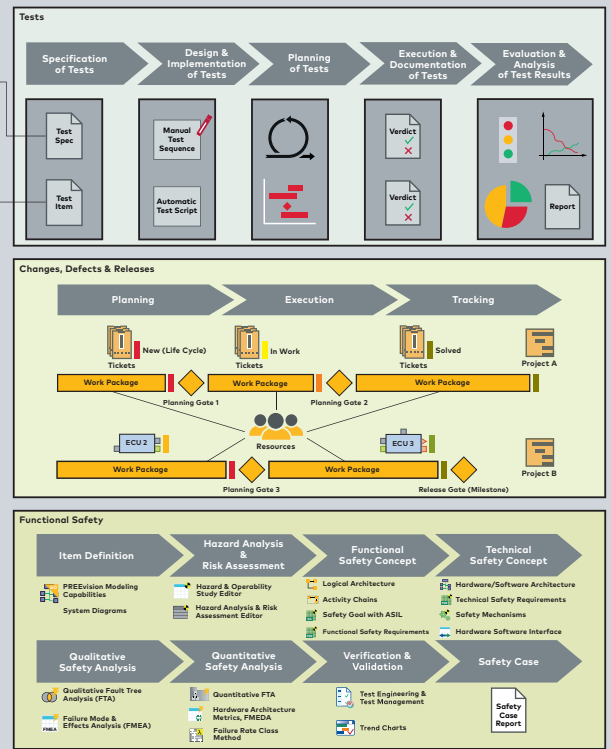


### PREEvision Layers



### Process & Team Support



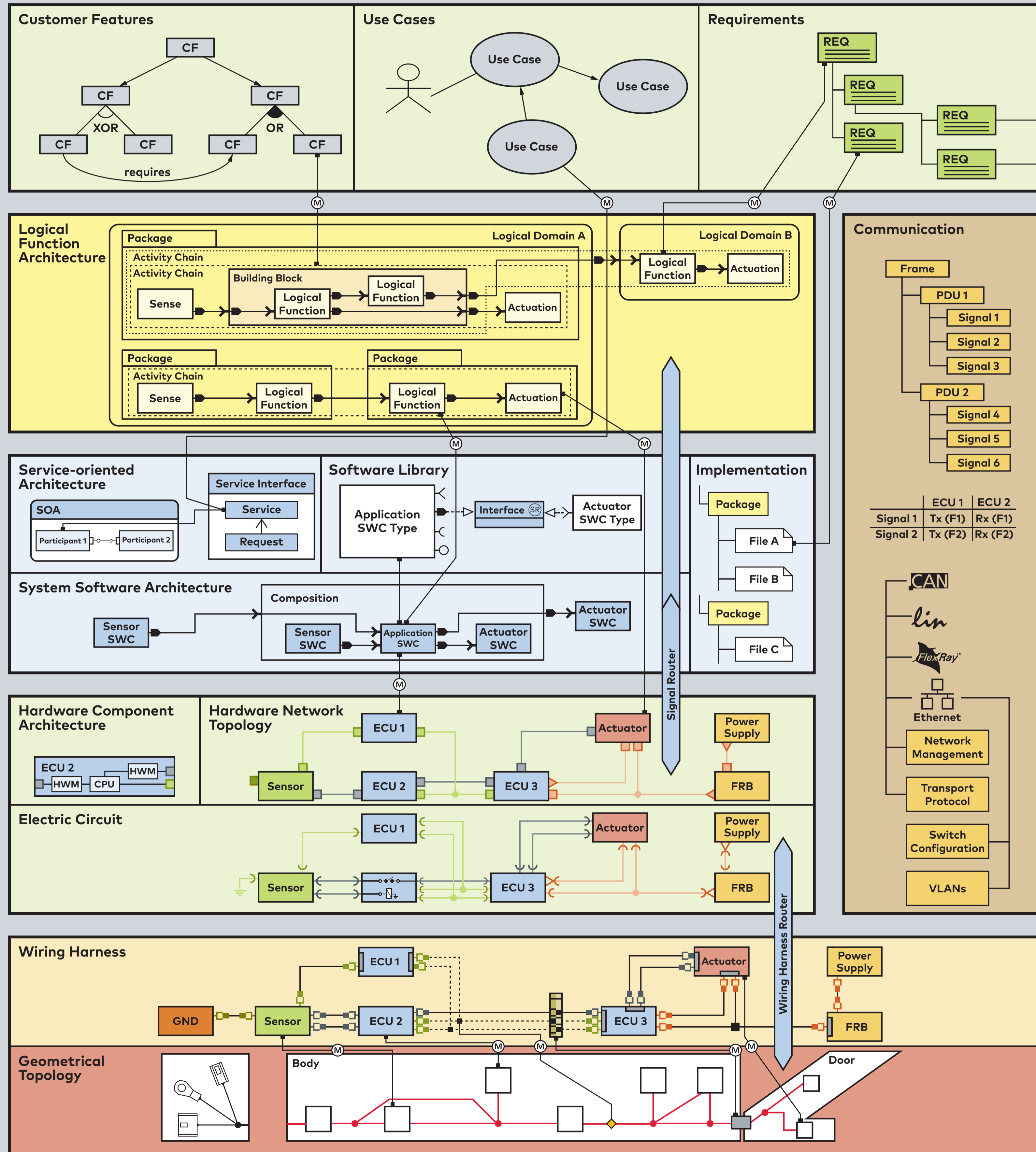
Model-based Electric/Electronic Development from Architecture Design to Series Production  
 PREEvision is the premier tool for model-based development of distributed, embedded systems in the automotive industry and related fields. This engineering environment supports the entire technical development process in a single integrated application. For the modeling of entire electric/electronic systems, from requirements to software and hardware architectures to the wiring harness, PREEvision provides a comprehensive data model with dedicated abstraction layers.

# PREEvision Model-based Electric/Electronic Development

## Infographic Modeling Layers and Process Support

You will find know-how, tools and services for model-based E/E development at:  
[www.vector.com/preevison](http://www.vector.com/preevison)

### PREEvision Layers



### Process & Team Support

