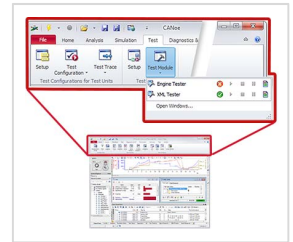


## CANoe 9.0 from Vector makes development and testing of ECUs easier and more convenient

**Stuttgart/GERMANY, 2016-04-29 – Vector has once again introduced numerous technical and user operation-related improvements into the new Version 9.0 of CANoe. The most apparent being the fundamentally revised operating concept of the high-performance tool, which is aligned to the most important application areas. This not only simplifies initial use of the tool for beginners; professional users also benefit from a simplified menu structure.**



[CANoe](#) is a versatile software tool for developing individual ECUs as well as entire networks. It supports the entire development process – from planning to final system testing. In Version 9.0, Vector is forging new paths with its operating concept. The menu structure is now organized according to the most important application cases: Analysis, Simulation, Test and Diagnostics. This new operating philosophy was implemented based on a contemporary “ribbon” approach.

The menu ribbon configured by the user also improves quick access to frequently used functions. The menu ribbon can be conveniently used to control logging, signal generators and macros. In addition, important windows and dialogs can be added to a favorites list. From the ribbon, the user can also insert important analysis windows – such as Trace, Graphic or Data Windows – into the measurement setup.

Version 9.0 of CANoe also supports the Functional Mock-up Interface (FMI). FMI is an open standard for exchanging simulation models (FMUs) between the tools of various manufacturers. CANoe can import and simulate FMUs as well as export them. FMU export is especially helpful to make connections between CANoe and other tools in an easy way and via a standardized interface.

With regard to AUTOSAR, the new CANoe version supports the system description for AUTOSAR 4.2. There is also a new communication layer for displaying and processing dynamic AUTOSAR PDUs in “PDU streaming”. Both new features are available for Ethernet and CAN FD.

In addition, the Interactive Generator Block (CAN IG) was fully revised and provided with a modern user interface. Now, signal generators are configured in CAN IG in the same way as for signal generators that are available as separate functions. This means that CANoe users do not need to learn different concepts.

All new features of CANoe 9.0 at: [www.vector.com/canoe9.0](http://www.vector.com/canoe9.0)

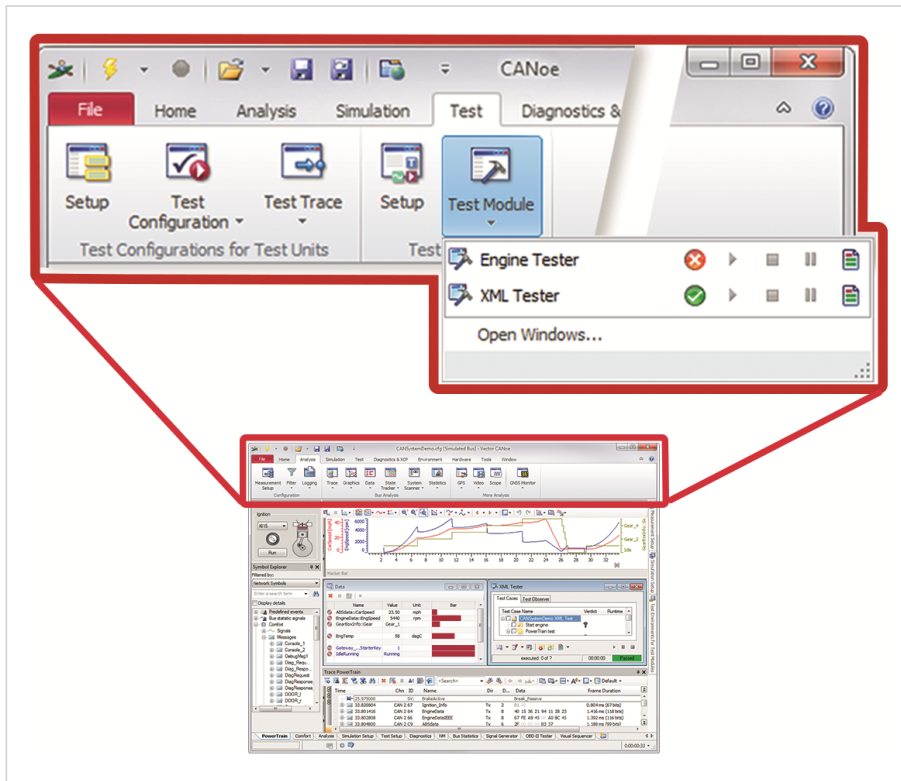


Figure: CANoe 9.0 user interface with new menu ribbon, which is subdivided into CANoe application areas  
Image rights: Vector Informatik GmbH

You can find this and other press releases on our website at: [www.vector.com/press](http://www.vector.com/press)

**International Press Contacts:**

Vector Informatik, Germany  
Stuttgart

Mrs. Heike Schmidt  
Phone: +49 711 80670-5356  
Fax: +49 711 80670-585356  
E-mail: [heike.schmidt@vector.com](mailto:heike.schmidt@vector.com)

Vector CANtech, North America  
Detroit

Mrs. Angela Ferrero  
Phone: +1 248 504 6447  
Fax: +1 248 449 9704  
E-mail: [angela.ferrero@vector.com](mailto:angela.ferrero@vector.com)

Vector Japan  
Tokyo

Mr. Shinsuke Yokoyama  
Phone: +81 3 5769 7825  
Fax: +81 3 5898 6975  
E-mail: [shinsuke.yokoyama@vector.com](mailto:shinsuke.yokoyama@vector.com)

Vector France

Vector Austria  
Vienna

Mr. Uwe Gerlinger  
Phone: +43 1 90160 10  
Fax: +43 1 90160 9910  
E-mail: [uwe.gerlinger@vector.com](mailto:uwe.gerlinger@vector.com)

Vector Scandinavia, Sweden  
Gothenburg

Mr. Jan Schüldt  
Phone: +46 31 764 76-05  
Fax: +46 31 764 76-19  
E-mail: [jan.schueldt@vector.com](mailto:jan.schueldt@vector.com)

Vector Korea  
Seoul

Mr. Yongseong Kim  
Phone: +82 70 8655 3320  
Fax: +82 2 807 0601  
E-mail: [yongseong.kim@vector.com](mailto:yongseong.kim@vector.com)

Vector India

## Paris

Mr. Henri Belda

Phone: +33 1 4 231 4001

Fax: +33 1 4 231 4009

E-mail: [henri.belda@vector.com](mailto:henri.belda@vector.com)

## Vector Great Britain

Birmingham

Mr. Simon Davies

Phone: +44 121 50681-51

Fax: +44 121 50681-69

E-mail: [simon.davies@vector.com](mailto:simon.davies@vector.com)

## Vector Italia

Milan

Mr. Christoph Dallmayr

Phone: +39 02 678171-14

Fax: +39 02 678171-35

E-mail: [christoph.dallmayr@vector.com](mailto:christoph.dallmayr@vector.com)

## Pune

Mr. Sachin Oswal

Phone: +91 20 6634 6600

Fax: +91 20 6634 6699

E-mail: [sachin.oswal@vector.com](mailto:sachin.oswal@vector.com)

## Vector China

Shanghai

Ms. Zita Ye

Phone: +86 21 6432 5353 113

Fax: +86 21 6432 5308

E-mail: [zita.ye@vector.com](mailto:zita.ye@vector.com)

## Vector Brazil

Sao Paulo

Mats Larsson

Phone: +55 11 5180 4550

Fax: +55 11 5181 7013

E-mail: [mats.larsson@vector.com](mailto:mats.larsson@vector.com)**About the Vector Group (Revised: April 2016):**

Vector Informatik is the leading manufacturer of software tools and embedded components for the development of electronic systems and their networking with many different systems from CAN to Automotive Ethernet.

Vector has been a partner of automotive manufacturers and suppliers and related industries since 1988. Vector tools and services provide engineers with the decisive advantage to make a challenging and highly complex subject area as simple and manageable as possible.

Vector employees work on electronic innovations for the automotive industry every day. Worldwide customers in the automotive, commercial vehicles, aerospace, transportation, and control technology industries rely on the solutions and products of the independent Vector Group for the development of technologies for future mobility.

Vector worldwide currently employs more than 1,540 people with sales of EUR 332 million in 2015. With its headquarter in Germany (Stuttgart), Vector has subsidiaries in the USA, Japan, France, Great Britain, Italy, Austria, Sweden, South Korea, India, China, and Brazil.